



LIGHTHOUSE

WORLDWIDE SOLUTIONS



HANDHELD 3016 IAQ PARTICLE COUNTER

Ergonomically designed and lightweight, the Lighthouse **HANDHELD 3016 IAQ** is the newest, most advanced handheld particle counter on the market, featuring Mass Concentration Mode that approximates density in $\mu\text{g} / \text{m}^3$.

Offering 6 channels of simultaneous particle counting, the **HANDHELD 3016 IAQ** displays both cumulative and differential particle count data as well as Temperature/Relative Humidity data on its easy to read 3.8" (9.65 cm) touch screen. A removable battery maximizes the **HANDHELD**'s uptime. Data is easily downloaded using the Lighthouse Data Transfer Software.

The **HANDHELD** will monitor particulate levels accurately and reliably, even in those "hard-to-reach" areas where two-handed operation is unsafe.

**Designed and built by
Lighthouse - a name you can trust.**

Lighthouse is an ISO 9001:2000 Registered company.

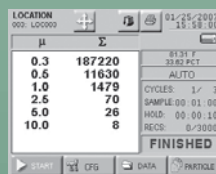
www.golighthouse.com

Features:

- ★ 0.3 - 10 μm Size Range
- ★ 0.1 CFM (2.83 LPM) Flow Rate
- ★ View 6 Particle Sizes Simultaneously
- ★ Approximate Mass Concentration in $\mu\text{g} / \text{m}^3$
- ★ 3.8" (9.25 cm) Touch Screen Interface
- ★ Removable / Rechargeable Li-Ion Battery
- ★ Large Memory for Storing Data (3,000 samples)
- ★ Concentration Limit - 4,000,000/ft³
- ★ Temperature/Relative Humidity Probe Included
- ★ 200 User Defined Alphanumeric Location Labels
- ★ Easily Configurable Interface with Zoom Capability
- ★ On Screen Data Buffer Viewing
- ★ Molded Handle Allows One-handed Sampling
- ★ Internal Audible Alarm
- ★ Ergonomically Designed
- ★ Lightweight
- ★ Data Easily Downloaded to Computer

Benefits:

- ★ 2 Year Warranty
- ★ User Friendly Interface
- ★ International Support
- ★ Low Cost of Ownership



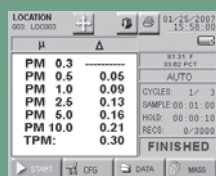
Backlit
Touchscreen
Interface



Removable
Rechargeable
Li-Ion Battery



One-handed
Operation with
Start & Stop
on Handle



Mass
Concentration
Screen



Removable
Temp / RH and
Isokinetic Probes



Easily Download
Data to PC



LIGHTHOUSE

WORLDWIDE SOLUTIONS



Specifications:

Size Range:	0.3 - 10.0 μm
Channel Sizes:	Standard: 0.3, 0.5, 1.0, 2.5, 5.0, 10.0 μm
Flow Rate:	0.1 CFM (2.83 LPM)
Counting Efficiency:	50% @ 0.3 μm ; 100% for particles > 0.45 μm (per JIS)
Laser Source:	Laser Diode
Zero Count Level:	<1 count / 5 minutes (per JIS)
Concentration Limits:	4,000,000 Particles / ft^3 @ 5% Coincidence Loss
Calibration:	NIST Traceable
Count Modes:	Automatic, Manual, Beep, Concentration, Cumulative/Differential, Mass Concentration
Data Storage	3,000 Sample Records, Rotating Buffer (includes particle and environmental data, plus location and time)
Communication Modes:	RS-232 via RJ-45 to PC or Printer
Supporting Software:	LMS XChange
Environmental Sensors:	Temperature/Relative Humidity Probe: 32-122°F(0-50°C) $\pm 1^\circ\text{F}$ (0.5°C), 15-90% $\pm 2\%$ RH
Touch Screen Display:	3.8" (9.65 cm), Monochrome, 320x240
Alarms:	Internal, Adjustable Alarm Buzzer. Alarms on Counts, Low Battery, Sensor Failure
Sample Inlet:	Isokinetic Sampling Probe
Sample Output:	Internally Filtered to HEPA Standards (>99.997% @ 0.3 μm)
Vacuum Source:	Internal Pump, Automatic Flow Control
Enclosure:	High Impact Injection Molded Plastic
Power:	100-240 V, 50-60 Hz
Battery:	Li-Ion, Removable & Rechargeable
Dimensions:	8.75" (l) x 5.0" (w) x 2.5" (h) [22.23 x 12.7 x 6.35 cm]
Weight:	2.2 lb (1kg)

Environmental Conditions:

Operating:	50°F to 104°F (10°C to 40°C) / 20% to 95% non-condensing
Storage:	14°F to 122°F (-10°C to 50°C) / Up to 98% non-condensing

Accessories:

Included:	Operating Manual on CD, Removable Battery, Isokinetic Sample Probe (direct mount), Purge Filter, Temperature/Relative Humidity Probe, Power Supply, Power Cord, LMS XChange Software
Optional:	Carrying Case, Isokinetic Sample Probe (with 6 ft tubing for extending Isokinetic Sampling input), Removable / Rechargeable Li-Ion Battery, External Battery Charger w/ AC & Car Adapter, Thermal Printer and Cable

Manufactured by:

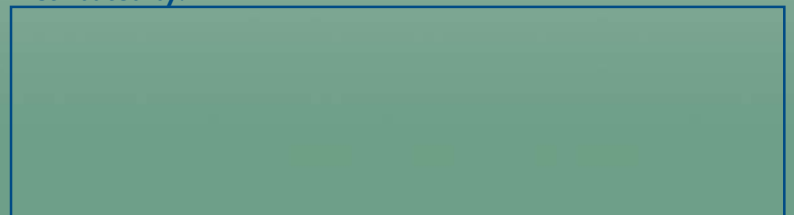


LIGHTHOUSE
WORLDWIDE SOLUTIONS

www.golighthouse.com
info@golighthouse.com



Distributed by:



Tel: 800 945 5905
510 438 0500 (Outside of USA)

Lighthouse Worldwide Solutions reserves the right to change specifications without notice.
LWS PN 545401610-1 Rev 3